



## THE LAND ROVER COLLECTION



ABOVE & BEYOND



# CONTENTS

THE LIFESTYLE COLLECTION	05
MEN'S APPAREL	08
WOMEN'S APPAREL	16
GIFTS AND LIFESTYLE	20
LUGGAGE	28
SUNGLASSES	32
RANGE ROVER COLLECTION	34
THE ABOVE AND BEYOND COLLECTION	45
MEN'S AND WOMEN'S APPAREL	48
DOG RANGE	66
ACCESSORIES	72
MODEL CARS	86
THE HERITAGE COLLECTION	93
MEN'S APPAREL	96
ACCESSORIES	98
DOG RANGE	108

---

EQUIP YOURSELF FOR THE ALL-TERRAIN  
LIFESTYLE. WITH ACCESSORIES AND APPAREL  
THAT TAKE LAND ROVER DESIGN INTO NEW  
TERRITORY. FEATURING EVERYTHING FROM  
CLASSIC CHRONOGRAPHS TO COLLECTORS'  
EDITION SCALE MODELS, IT'S A RANGE THAT'S  
RUGGED AND STYLISH. INSPIRED BY THE  
LAND ROVER SPIRIT OF ADVENTURE.  
AND BUILT TO GO THE DISTANCE.

---



ABOVE & BEYOND



# THE LIFESTYLE COLLECTION



ABOVE & BEYOND

A man with a beard and short dark hair, wearing a blue high-necked jacket, stands next to a large, layered rock formation. The background shows a hazy landscape with hills under a cloudy sky. The image is framed by a dark blue border with white topographic line patterns.

THE LIFESTYLE COLLECTION

LIVE ALL



A person wearing a blue jacket is standing next to a large, light-colored concrete pillar. The background is a blurred outdoor setting with a railing and some greenery.

# TERRAIN

Whether you're escaping the city or exploring it, the Land Rover collection is at home in every terrain. Distinctive and well crafted, it's a range of apparel and accessories designed for life, wherever it's lived.

. .  
. .  
. .  
. .  
. .  
. .  
. .  
. .  
. .  
. .

# MEN'S APPAREL

The all-terrain spirit of Land Rover continues in our menswear collection. Instilled with the same unrivalled versatility, it's ready for anywhere.

## MEN'S HOODED RAIN JACKET

Take shelter seriously with this water-resistant jacket. Lined with breathable mesh, it features an adjustable hood and Land Rover perforation detailing and chamfering throughout. Finished with taped seams and Durable Water Repellent (DWR®) coating.

Navy

XS	51LGJM452NVB	XL	51LGJM452NVF
S	51LGJM452NVC	XXL	51LGJM452NVG
M	51LGJM452NVD	XXXL	51LGJM452NVH
L	51LGJM452NVE	XXXXL	51LGJM452NV3







## MEN'S APPAREL



### MEN'S MODERN DRIVER'S JACKET

Be ready for every kind of road. This contemporary driver's jacket offers incredible versatility. Features quilted shoulders, branded poppers to the cuffs and a brushed-metal effect wordmark tag. Water-resistant zips and DWR® coating.

Black

XS	51LGJM450BKB	XL	51LGJM450BKF
S	51LGJM450BKC	XXL	51LGJM450BKG
M	51LGJM450BKD	XXXL	51LGJM450BKH
L	51LGJM450BKE	XXXXL	51LGJM450BK3



## MEN'S ZIP UP SOFTSHELL JACKET

Softshell made from a nylon elastane mix for ultimate protection and mobility. Features laser-cut Land Rover perforation detailing, and chamfering. With storm cuffs, a concealed hood and microfibre lined pockets for added warmth.

### Navy

XS	51LGJM451NVB	XL	51LGJM451NVF
S	51LGJM451NVC	XXL	51LGJM451NVG
M	51LGJM451NVD	XXXL	51LGJM451NVH
L	51LGJM451NVE	XXXXL	51LGJM451NV3



### OVAL BADGE MESH BACK CAP

Comfortable and breathable cap with oval badge to the front. Features contrast piping and eyelets, Land Rover wordmark tape to the interior, rear mesh panels and an adjustable snapback.

Green - 51LGCH489GNA



### WORDMARK CAP

Two-tone cap with Land Rover wordmark. Features contrast peak and eyelets, wordmark tape to the interior and a branded metal adjuster.

Navy - 51LGCH455NVA

## MEN'S CLASSIC SHIRT

Smart button-down collar shirt made from an easi-care cotton mix. Features welt pocket with pen section and tonal Land Rover wordmark. Contrast detailing to the buttons, placket, inner lining and cuffs.

Grey

XS	51LGS453GYB	XL	51LGS453GYF
S	51LGS453GYC	XXL	51LGS453GYG
M	51LGS453GYD	XXXL	51LGS453GYH
L	51LGS453GYE	XXXXL	51LGS453GY3

MEN'S APPAREL







#### MEN'S ACCENT COLLAR POLO SHIRT

100% cotton piqué polo shirt with contrast tipping to the collar and cuffs. Features Land Rover wordmark to the chest, concealed buttons, and a side tab with Land Rover perforation detailing.

##### Grey

XS	51LGPM456GYB	XL	51LGPM456GYF
S	51LGPM456GYC	XXL	51LGPM456GYG
M	51LGPM456GYD	XXXL	51LGPM456GYH
L	51LGPM456GYE	XXXXL	51LGPM456GY3



#### MEN'S ACCENT COLLAR POLO SHIRT

100% cotton piqué polo shirt with contrast tipping to the collar and cuffs. Features Land Rover wordmark to the chest, concealed buttons, and a side tab with Land Rover perforation detailing.

##### Navy

XS	51LGPM456NVB	XL	51LGPM456NVF
S	51LGPM456NVC	XXL	51LGPM456NVG
M	51LGPM456NVD	XXXL	51LGPM456NVH
L	51LGPM456NVE	XXXXL	51LGPM456NV3



#### MEN'S RELIEF MAP T-SHIRT

A cotton jersey crew neck T-shirt with high build topography graphic. Features Land Rover wordmark, twin-needle stitching to the hem and sleeves and a side tab with Land Rover perforation detailing.

##### Grey

XS	51LGT457GYB	XL	51LGT457GYF
S	51LGT457GYC	XXL	51LGT457GYG
M	51LGT457GYD	XXXL	51LGT457GYH
L	51LGT457GYE	XXXXL	51LGT457GY3



#### MEN'S RELIEF MAP T-SHIRT

A cotton jersey crew neck T-shirt with high build topography graphic. Features Land Rover wordmark, twin-needle stitching to the hem and sleeves and a side tab with Land Rover perforation detailing.

##### Navy

XS	51LGT457NVB	XL	51LGT457NVF
S	51LGT457NVC	XXL	51LGT457NVG
M	51LGT457NVD	XXXL	51LGT457NVH
L	51LGT457NVE	XXXXL	51LGT457NV3



# WOMEN'S APPAREL

Always effortlessly stylish. Now enhanced with smart thermal technology. This collection of womenswear breaks new ground, wherever you wear it.

## WOMEN'S QUILTED GILET

A tapered fit gilet designed to retain your body heat. Features thermal insulation, heat-welded panels and side pockets. With geometric graphic detail to the inner lining and upper back, silicone sports zip-pulls and printed Land Rover wordmark to the chest.

Water-resistant with DWR® coating.

Navy

8	51LGJW487NVI	16	51LGJW487NVM
10	51LGJW487NVJ	18	51LGJW487NVN
12	51LGJW487NVK	20	51LGJW487NV2
14	51LGJW487NVL		





## WOMEN'S QUILTED JACKET

Combat the cold with this all-weather quilted jacket in a tapered fit. Features thermal insulation, heat-welded panels, high neck and side pockets. With geometric graphic detail to the inner lining and upper back, sports zip-pulls and Land Rover wordmark to sleeve. Water-resistant with DWR® coating.

### Navy

8	51LGJW486NVI	16	51LGJW486NVM
10	51LGJW486NVJ	18	51LGJW486NVN
12	51LGJW486NVK	20	51LGJW486NV2
14	51LGJW486NVL		





### WOMEN'S WORDMARK T-SHIRT

A cotton elastane jersey T-shirt in our new tapered fit. Features subtle Land Rover wordmark to the chest, twin-needle stitching, and a side tab with Land Rover perforation detailing.

#### Navy

8	51LGTW484NVI	16	51LGTW484NVM
10	51LGTW484NVJ	18	51LGTW484NVN
12	51LGTW484NVK	20	51LGTW484NV2
14	51LGTW484NVL		



### NECK WARMER

Ward off winter with this multifunctional unisex Neck Warmer. Made from performance poly-elastane, with topography graphic and Land Rover wordmark to the front.

Navy - 51LGSF459NVA





# GIFTS & LIFESTYLE

From high-performance pens to classic collectibles, gift beyond the ordinary with our exclusive range of Land Rover lifestyle accessories.

## 1. LANYARD

A smart Lanyard with contrast grey leather trim and lobster clasp. Features geometric graphic detail to one side and Land Rover wordmark to the other.

Navy - 51LGGF470NVA

## 2. PERFORATED LEATHER LOOP KEYRING

A hard-wearing loop keyring made from fine leather. Features debossed Land Rover wordmark and perforation detailing, with bamboo colour stitching.

Navy - 51LGKR468NVA

Ivory - 51LGKR468IVA

## 3. NYLON WALLET

Textured wallet with Land Rover wordmark and chamfering stitch detail. Features contrast grey interior with space for three cards and a coin pocket.

Navy - 51LGGF465NVA

## 4. MATTE CERAMIC TRAVEL MUG

This double-walled ceramic travel mug features the Land Rover wordmark and silicone band around the middle.

Navy - 51LGMG491NVA

## 5. MATTE STONEWARE MUG

Branded stoneware mug with a robust construction and a matte Navy finish.

Features Land Rover wordmark and geometric graphic detail.

Navy - 51LGMG474NVA

## 6. WATER BOTTLE / STAINLESS STEEL TRAVEL FLASK

Food grade travel flask with easy-grip surface.

Features Land Rover wordmark and geometric graphic detail.

Navy - 51LGGF460NVA







## GIFTS & LIFESTYLE



### LAND ROVER iPHONE XS COVER

iPhone case featuring geometric graphic detail and Land Rover wordmark. Made from hard plastic with a rubberised matte finish.

**Navy - 51LGP521NVA**



### LEATHER iPHONE XS CASE

Leather iPhone case, featuring foil Land Rover wordmark.

**Navy - 51LGP519NVA**



### USB BATTERY POWER CHARGER

Anodised aluminium USB power charger with laser-engraved Land Rover wordmark and geometric graphic detail. Includes 3-in-1 cable with micro, lightning and type C connectors. 8000mAh external battery.

**Navy - W 74mm H 150mm D 11.8mm**  
**51LGP473NVA**



### LEATHER WRAPPED iPHONE CABLE

USB cable for iPhone with leather casing in Navy. Includes 3-in-1 cable with micro, lightning and type C connectors. With Land Rover wordmark and oval badge on the connectors. MFI certified.

**Navy - 51LGP495NVA**





#### POCKET UMBRELLA

A Navy pocket-sized umbrella featuring the Land Rover wordmark.  
Navy - 51LEUM282NVA



#### PREMIUM GOLF UMBRELLA

Non-conductive fibreglass frame golf umbrella. Features vented canopy for additional wind resistance and Land Rover wordmark to the canopy edge.  
Navy - 51LEUM123NVA



#### DEFENDER MULTI TOOL

Black steel credit card sized multi tool crafted into a Defender silhouette. Features a range of practical tools including tyre tread gauge.  
Black - 51LDTT619NVA



#### TRAVEL MUG STAINLESS STEEL

This stainless steel travel mug features an easy to grip silicone band around the middle and Terrain Response® branding.  
Navy - 51LGMG915NVA

## GIFTS & LIFESTYLE



### RELIEF MAP TOTE BAG

Reusable canvas tote bag with topography graphic in contrast navy. Features Land Rover wordmark to the front.

Ecru - 51GLU461WTA



### NOTE BOOK LARGE A5

A notebook to travel with. Featuring Land Rover wordmark and perforation detailing to the front cover. With matching elastic strap and bookmark ribbon.

Navy - 51LGNB517NVA

### CARRAN D'ACHE FOR LAND ROVER BALLPOINT PEN

Embodying the true spirit of Land Rover, these durable writing instruments have been designed in collaboration with renowned Swiss stationer, Carran d'Ache. Made from anodised aluminium and finished in a choice of three Land Rover colours, these are pens that never fail to impress.

Orange - 51LFPN369ORA

Black - 51LFPN369BKA

Gunmetal - 51LFPN369GUA





#### LAND ROVER SOLAR WATCH

A new generation solar-powered chronograph with 3 auxiliary sub-dials. Fitted with high-resistance mineral glass and a rubber strap for active use. Features power reserve indicator, orange detailing and Land Rover wordmark. Supplied in Land Rover presentation box.

Black - 51LHWM976BKA

## CHILDREN'S TRICYCLE

All the fun on three wheels. This sturdy single-tube trike with multi-use platform will be their vehicle of choice for every adventure. Finished in Tectonic Grey with Orange front fork.

Suitable for children aged 2-5 years.

Grey - 51LFBK364GYA







#### RANGE ROVER RIDER RIDE ON

This ride-on car with working front and rear LED lights features low-noise tyres and a soft-touch seat for comfort.

Suitable for children aged 18-36 months.

Lights powered by 3 x AA batteries (not included).

White - 51LDY926WTA

Red - 51LDY926RDA





# LUGGAGE

Our state-of-the-art luggage is made for exploring new lands and new opportunities. When the adventure never ends, it's the place to start.



## NYLON HOLDALL

Whatever you're packing for, you'll be well prepared with this Nylon Holdall. This versatile bag with padded shoulder strap, internal pockets and compartments, features Land Rover chamfering and wordmark branding to the front panel and is finished with bamboo colour trim and zip-pulls.

Navy - 51LGLU462NVA



## NYLON BRIEFCASE

All-purpose briefcase with 16" protective laptop sleeve. Features quilted panelling on both sides, bamboo colour trim and Land Rover chamfering, with wordmark to the front panel and padded shoulder strap.

Navy - 51LGLU464NVA

## NYLON RUCKSACK

Versatile rucksack with internal organiser and 16" protective laptop sleeve. Features quilted panelling on both sides, bamboo colour trim and zip-pulls, with Land Rover chamfering and wordmark to the front. Navy - 51GLU463NVA

LUGGAGE







#### LAND ROVER BUSINESS HARD CASE

Taking design cues from our Land Rover skid plate, this business case in Graphite Grey is ready for whatever the workday brings. A polycarbonate shell, an aluminium frame and TSA-approved locks mean important documents are always kept secure. An insert badge to the front and a woven wordmark to the inner lining add style, while more practical touches include several internal compartments and an extendable handle.

Business - 51LELU261GYA  
W 45cm H 35cm D 20cm  
Graphite Grey

#### LAND ROVER HARD CASE SUITCASES

Taking design cues from our Land Rover skid plate, these hard cases in Graphite Grey are as resilient and adventure-ready as our vehicles. A polycarbonate shell, aluminium frame and TSA-approved locks mean you'll always travel securely. An insert badge to the front and a woven wordmark to the inner lining add style, while practical touches include several internal compartments and multidirectional tour wheels.

Small - 51LELU262GYA  
W 35cm H 55cm D 23cm  
Graphite Grey

Large - 51LELU264GYA  
W 50.6cm H 73cm D 34cm  
Graphite Grey

Medium - 51LELU263GYA  
W 46.5cm H 68cm D 26cm  
Graphite Grey



# SUNGLASSES

With anti-glare technology and high UV protection, our Land Rover branded sunglasses mean you can look forward to every horizon.



## 1. LAND ROVER NEVIS SUNGLASSES

Purposely designed to reduce visual glare, these next generation Nevis Sunglasses feature a subtle Land Rover wordmark to the frame.

Gunmetal -  
51LEGM373GYA LIMITED  
AVAILABILITY

## 2. LAND ROVER LONGNOR SUNGLASSES

Reflecting Land Rover's British heritage, these Longnor Sunglasses feature a distinctive British style hinge with a textured frame in Green and Grey.

Green / Grey - 51LEGM370GNA  
LIMITED AVAILABILITY



4



5



3



6

### 3. LAND ROVER SNOWDON SUNGLASSES

Utilising innovative matte acetate materials and protective polarised OBEXTM mirror lenses, these Snowdon Sunglasses have been crafted for an active, outdoor lifestyle.

Tortoiseshell - 51LEGM377BNA

LIMITED AVAILABILITY

### 4. LAND ROVER USK SUNGLASSES

A sophisticated style suited for all occasions, these Usk Sunglasses feature a modern eye shape with the Land Rover wordmark to the lens.

Black - 51LEGM379BKA

LIMITED AVAILABILITY

### 5. LAND ROVER SCAFELL SUNGLASSES

Ideal for the rugged adventurer, the Scafell Sunglasses have a monobloc construction with a fitted wrap-around frame and OBE hinges.

Blue - 51LEGM376BLA

LIMITED AVAILABILITY

### 6. LAND ROVER MERRICK SUNGLASSES

Made from premium acetate and crafted with a flex hinge and mirror lenses. These components work to create a sleek and masculine frame. The ideal outdoors accessory.

Black - 51LEGM371BKA

LIMITED AVAILABILITY

RANGE ROVER COLLECTION

# REFINEMENT REDEFINED



Refinement is all in the details. It's a story told in the quality of our materials and our sophisticated design. Something you can see in our exclusive range of lifestyle accessories, inspired by the luxurious Range Rover interiors. It's more than refinement. It's refinement redefined.



#### RANGE ROVER WATCH

A refined watch inspired by the classic Range Rover marque. Featuring black sun-ray dial and Milanese strap. Ultra-thin black gloss design with quartz movement. Supplied in high gloss piano black branded watch box. Water-resistant to 5 ATM. Black - 51LHWM973BKA









**RANGE ROVER LEATHER WALLET**

An elegant cross-grained leather wallet in Deep Garnet with chevron print to the inner lining. Features Range Rover Rotary Dial detail with debossed wordmark to the inside.

Deep Garnet - 51LGLG419BUA

**RANGE ROVER CARD CASE**

Cross-grained leather card case in Deep Garnet with four card slots and a centre note compartment. Features Range Rover Rotary Dial detail with debossed wordmark to the reverse.

Deep Garnet - 51LGLG420BUA

**RANGE ROVER CUFFLINKS**

A refined set of whale-back cufflinks inspired by the Range Rover Rotary Dial and crafted from milled steel. With a Black nickel finish and debossed wordmark.

Black - 51LGCL417BKA



#### **UNISEX RANGE ROVER CAP**

Stylish Range Rover headwear. Created in tandem with our vehicle design studio. Sharp black trim. Chevron stitching. 3D metal effect branding. Fully adjustable with high quality gunmetal hardware. Black - 51LHCH961BKA



#### **RANGE ROVER SUNGLASSES - RRS103 SILVER**

Lightweight aviator-style sunglasses in Silver. Machined from a single sheet of Japanese Beta-titanium, with NXT® polarized lenses for ultimate UV protection and colour clarity. Other styles available. Silver - 51LGGM523SLA



RANGE ROVER LEATHER HOLDALL

True style is never overstated. This classic holdall is fashioned from supple full-grained leather. Featuring a discreet Range Rover wordmark, soft interior lining and a detachable shoulder strap. Finished with leather zip-pulls, gunmetal hardware and trim.

Black - 51LGLU455BKA





#### RANGE ROVER LEATHER TOTE BAG

Style, simplicity, sophistication. It all comes to the fore with this cross-grained leather tote bag in Deep Garnet. Featuring a chevron print lining with an easy-to-reach internal key pocket, its design is understated yet unmistakable. Subtle branding includes a Range Rover Rotary Dial detail with magnetic closure, and a debossed wordmark to the reverse.

Deep Garnet - 51LGLX423BUA

#### RANGE ROVER LEATHER FLAP PURSE

Cross-grained leather purse in Deep Garnet with eight card slots and an internal zip pocket. Features Range Rover Rotary Dial detail with concealed press stud, and debossed wordmark to the reverse.

Deep Garnet - 51LGLG422BUA

**MONTEGRAPPA FOR RANGE ROVER PEN**

Made from a robust polymer with a sleek Black finish, this premium pen features the technical detailing of our Sports Utility Vehicle. Designed by Land Rover and made by Montegrappa, the first Italian designer of superior writing instruments, each pen is a fine example of craftsmanship and style.  
Black - 51LFPN376BKA



**RANGE ROVER UMBRELLA**

Your cover for all conditions. This wind-tested Range Rover Umbrella features a black leather handle with debossed Range Rover wordmark, spring-loaded automatic opening and polycotton canopy.  
Black - 51LEUM144BKA



**RANGE ROVER ROUND KEYRING**

Crafted from milled steel, this distinctive keyring is inspired by the Range Rover Rotary Dial. With a Black nickel finish and debossed wordmark to the outer ring edge.  
Black - 51LGKR416BKA

## CLOTHING SIZE GUIDE

UK MEN'S	CHEST (CM)
XS	88
S	92
M	97
L	102
XL	107
XXL	112
XXXL	117
XXXXL	122

UK WOMEN'S	BUST (CM)
8	77
10	82
12	87
14	92
16	97
18	102
20	107

Product availability and pricing are subject to change. All copy and images remain the copyright of Jaguar Land Rover. Correct at time of publication; subject to availability and market; Jaguar Land Rover reserve the right to remove or change specification of items in the range at any time.



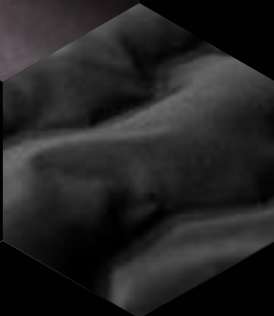
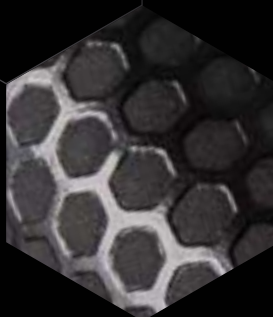




# THE ABOVE AND BEYOND COLLECTION



ABOVE & BEYOND







# DESIGNED TO ENDURE

The new Land Rover Defender goes above and beyond. And now there's a collection to match. A collaboration between Land Rover and Musto that's rugged and innovative, it's designed to take you anywhere and take on anything. Made from strong and resilient materials. Crafted with technical precision. And tested in real-world conditions. It's what endurance is made of.

RODINIA HYBRID JACKET

# SHIELDS

Showerproof and versatile, this softshell jacket is a defence against the elements. Designed with quick burst zip technology that allows you to remove the sleeves in a single movement, turning it from jacket to gilet in seconds. Featuring fast-drying Durable Water Repellent (DWR®) treated fabric and PrimaLoft® eco-insulation for compressible warmth.

MEN'S RODINIA HYBRID JACKET

Black

LIMITED AVAILABILITY

XS	51LGJM371BKB	XL	51LGJM371BKF
S	51LGJM371BKC	XXL	51LGJM371BKG
M	51LGJM371BKD	XXXL	51LGJM371BKH
L	51LGJM371BKE		



Reflective prints feature glass bead technology.



Reverse coil, bi-colour YKK zip.



Quick burst zips for easy sleeve removal.



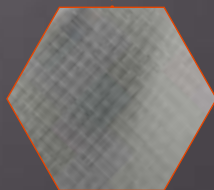
Durable Water Repellent (DWR®) coating.



Concealed pocket for sleeve stowage.



PrimaLoft® Black Eco recycled insulation.



Constructed from ultra-resistant Schoeller® stretch fabric.

**WOMEN'S RODINIA HYBRID JACKET**  
Black

8	51LGJW377BKI	14	51LGJW377BKL
10	51LGJW377BKJ	16	51LGJW377BKM
12	51LGJW377BKK	18	51LGJW377BKN



**MEN'S & WOMEN'S JACKET FEATURES**

- Constructed from abrasion-proof Schoeller® stretch fabric.
- Durable Water Repellent (DWR®) coating allows water to bead and run off for faster drying times.
- PrimaLoft® Black Eco recycled insulation for eco-friendly, lightweight and compressible warmth.
- Ergonomic YKK zip with reverse coil construction.
- Reflective prints feature glass bead technology for enhanced visibility.
- Quick burst zip technology transforms jacket into gilet.
- Concealed pocket for stowing removable sleeves.



## SCORIA TECH MID LAYER

Cold weather comfort. Casual style. The ultimate mid layer for outdoor activities. Rugged and warm with a water-repellent finish. Featuring a 4-way stretch construction for unrivalled flexibility and comfort. Complete with orange shock-cords to the hood.



MEN'S SCORIA TECH  
MID LAYER

### MEN'S SCORIA TECH MID LAYER

Grey

XS	51LGHM372GYB	XL	51LGHM372GYF
S	51LGHM372GYC	XXL	51LGHM372GYG
M	51LGHM372GYD	XXXL	51LGHM372GYH
L	51LGHM372GYE		

## MEN'S & WOMEN'S JACKET FEATURES

- Durable Water Repellent (DWR®) coating.
- Glass bead technology.
- 4-way stretch construction.



WOMEN'S SCORIA TECH  
MID LAYER

## **WOMEN'S SCORIA TECH MID LAYER**

Grey

8	51LGHW378GYI	14	51LGHW378GYL
10	51LGHW378GYJ	16	51LGHW378GYM
12	51LGHW378GYK	18	51LGHW378GYN



## TEPHRA GORE-TEX SHELL PARKA

Endure the extremes. The tech-packed, triple-layer parka is the ultimate protective garment. Featuring a precision-engineered construction that provides superlative wind and waterproof performance.

### MEN'S TEPHRA GORE-TEX SHELL PARKA Black

LIMITED AVAILABILITY

XS	51LGJM3688KB	XL	51LGJM3688KF
S	51LGJM3688KC	XXL	51LGJM3688KG
M	51LGJM3688KD	XXXL	51LGJM3688KH
L	51LGJM3688KE		



MEN'S TEPHRA GORE-TEX  
SHELL PARKA





WOMEN'S TEPHRA GORE-TEX  
SHELL PARKA

#### MEN'S & WOMEN'S JACKET FEATURES

- 3-layer GORE-TEX laminate provides superior weatherproofing and breathability.
- Durable Water Repellent (DWR®) coating.
- Water-resistant YKK zips with AquaGuard® (Coil).
- Embedded COHÆSIVE™ cord locks for easy, one-handed adjustment.
- Cargo pockets feature water deflecting top closures.
- Reflective prints feature glass bead technology for enhanced visibility.
- Two-way adjustable hood.

#### WOMEN'S TEPHRA GORE-TEX SHELL PARKA Black

LIMITED AVAILABILITY

8	51LGJW374BKI	14	51LGJW374BKL
10	51LGJW374BKJ	16	51LGJW374BKM
12	51LGJW374BKN	18	51LGJW374BKN



## WELDED THERMO JACKET

Insulation meets innovation in this ultrasonic Welded Thermo Jacket. Constructed with PrimaLoft® insulation fused with Aerogel for the performance of natural down. Seamless design. Unsurpassed comfort. And peerless durability in all terrains.



### MEN'S WELDED THERMO JACKET Black

XS	51LGJM370BKB	XL	51LGJM370BKF
S	51LGJM370BKC	XXL	51LGJM370BKG
M	51LGJM370BKD	XXXL	51LGJM370BKH
L	51LGJM370BKE		

MEN'S WELDED  
THERMO JACKET



WOMEN'S WELDED  
THERMO JACKET

#### MEN'S & WOMEN'S JACKET FEATURES

- 3-layer waterproof shell fabric with polyester face.
- Equipped with a RECCO® integrated reflective antenna that helps rescue teams locate you in difficult terrain.
- PrimaLoft® Silver insulation provides warmth of natural down without the weight.
- PrimaLoft® Aerogel-lined pocket keeps mobile phones charged for longer.
- Embedded COHÆSIVE™ cord locks for easy, one-handed adjustment.
- Reflective prints feature glass bead technology for enhanced visibility.

#### WOMEN'S WELDED THERMO JACKET Black

##### LIMITED AVAILABILITY

8	51LGJW376BKI	14	51LGJW376BKL
10	51LGJW376BKJ	16	51LGJW376BKM
12	51LGJW376BKK	18	51LGJW376BKN



## LITE GORE-TEX PACKABLE JACKET

Feather-light. Fully stowable. This jacket is made from highly breathable GORE-TEX fabric. An articulated construction with fully-taped seams, it ensures superior waterproof protection. A form-fitting jacket for high-intensity activities.



### MEN'S LITE GORE-TEX PACKABLE JACKET Black

XS	51LGJM369BKB	XL	51LGJM369BKF
S	51LGJM369BKC	XXL	51LGJM369BKG
M	51LGJM369BKD	XXXL	51LGJM369BKH
L	51LGJM369BKE		

MEN'S LITE GORE-TEX  
PACKABLE JACKET



WOMEN'S LITE GORE-TEX  
PACKABLE JACKET

#### MEN'S & WOMEN'S JACKET FEATURES

- Constructed from ultra-breathable GORE-TEX Active fabric.
- Fully waterproof with taped seams.
- Packs away into pocket for easy attachment to belt loops and bags.
- Reflective prints feature glass bead technology for enhanced visibility.
- Durable Water Repellent (DWR®) coating.
- Embedded COHÆSIVE™ cord lock for easy adjustment.

#### WOMEN'S LITE GORE-TEX PACKABLE JACKET Black

8	51LGJW375BKJ	14	51LGJW375BKL
10	51LGJW375BKJ	16	51LGJW375BKM
12	51LGJW375BKK	18	51LGJW375BKN



## REVERSIBLE BASE LAYER

A Reversible Base Layer that adapts to the seasons. Made with thermal regulating merino fabric on one side and breathable polyester fabric on the other. Featuring flatlocked seams with black reflective prints and glass bead technology for enhanced low-light visibility.



### MEN'S REVERSIBLE BASE LAYER

Grey

XS	51LGT373GYB	XL	51LGT373GYF
S	51LGT373GYC	XXL	51LGT373GYG
M	51LGT373GYD	XXXL	51LGT373GYH
L	51LGT373GYE		

MEN'S REVERSIBLE  
BASE LAYER





WOMEN'S REVERSIBLE  
BASE LAYER

#### MEN'S & WOMEN'S BASE LAYER FEATURES

- Merino fabric provides thermal regulation, wicking and anti-odour properties.
- Reverse side features polyester fabric that's breathable, wicking and fast-drying.
- UPF 30 sun protection.
- Reflective prints feature glass bead technology for enhanced visibility.
- Water-resistant pocket for phone.

#### WOMEN'S REVERSIBLE BASE LAYER Black

8	51LGTW379BKI	14	51LGTW379BKL
10	51LGTW379BKJ	16	51LGTW379BKM
12	51LGTW379BKK	18	51LGTW379BKN

## LAND ROVER MUSTO LOGO T-SHIRT

A timeless T-shirt. An iconic accessory. Featuring a distinctive topographic logo and orange piping to the neck. Made from breathable cotton.

### FEATURES

- Topographic logo design.
- Features contrast piping.
- 100% soft cotton jersey.



### Grey

S	51LHTM947GMC	XL	51LHTM947GMF
M	51LHTM947GMD	XXL	51LHTM947GMD
L	51LHTM947GME		

## LAND ROVER MUSTO LOGO HOODIE

Casual hoodie. Classic design. This stylish mid layer comes in Gunmetal Grey with distinctive orange detailing. Featuring topographic logo to the front. Made from 100% cotton.

### FEATURES

- Jersey-lined hood in contrast orange.
- Ideal layer for outdoor activity.
- 100% cotton loop-back fabric.



### Gunmetal Grey

S	51LHHM454GUC	XL	51LHHM454GUF
M	51LHHM454GUD	XXL	51LHHM454GUG
L	51LHHM454GUE		



## ABOVE AND BEYOND BEANIE

Simple. Subtle. Essential. A double-layered beanie that offers twice the protection in the great outdoors. Designed with a reflective label and turned-up cuff. Headwear that prepares you for anything.

### FEATURES

- Double layered for warmth.
- Comfortable ribbed construction.
- Reflective branded label.

**Black**

51LHCH458BKA





## ABOVE AND BEYOND SUNGLASSES

Technically proficient sunglasses with cutting-edge design. Made from ultra-light Grilamid Polyamide. Featuring single-mould frames with matte finish and 100% UVA, UVB and UVC protection. Supplied in a durable Land Rover travel case.

**Orange lens**  
51LGGM9450RA

**Brown lens**  
51LGGM944MXA

### FEATURES

- Polarised lenses with matte-finish frames.
- Constructed with UV400 filter.
- Integrated grip on temples.
- Rugged outdoor case featuring Above and Beyond zip-pulls.
- Also available with Smoked Grey frames and Brown lenses.



ABOVE AND BEYOND BLIZZARD COAT

# PROTECTS

The ultimate defence for dogs. This technical outer layer protects dogs against the cold and the wet. Features weatherproof outer made from black hexagon nylon. With 4 layers for superior warmth, and 4 reflective points for low-light visibility. Designed for easy adjustment and a precision fit.

## FEATURES

- Tail opening.
- Leather strap.
- Reflective stitching.

## **Black and Orange**

AVAILABLE JANUARY 2021

S	51LGPT938MXC
M	51LGPT938MXD
L	51LGPT938MXE
XL	51LGPT938MXF





3 point adjustment  
for perfect fit.

Reflective piping for  
low-light visibility.

Silicone moulded badge.

Waterproof nano-  
treated outer.

Micro-fleece base layer  
for superior warmth.

Underbody protection.



## ABOVE AND BEYOND DOG HARNESS

Next generation harness. Designed for comfort and made with hard-wearing components. Featuring fully-padded body with breathable mesh lining. Includes sports buckle, padded traffic handle and rust-resistant nickel D-ring.

### FEATURES

- High-resistance hexagon jacquard nylon.
- Fully adjustable for a secure fit.
- Removable chest pad for ease of movement.
- Reflective print and piping.
- Attachment loops for accessories.

**Black and Orange**  
AVAILABLE JANUARY 2021

S	51LGPT937MXC
M	51LGPT937MXD
L	51LGPT937MXE





## ABOVE AND BEYOND ADJUSTABLE DOG LEAD

Designed for visibility. Woven for endurance. This adjustable dog lead with bungee cord is created for all-round versatility. Features a padded handle, Land Rover branding and reflective piping for visibility in low light.

### FEATURES

- Traffic handle for close control.
- Shock absorbing cord.
- Land Rover utility clip on handle.

#### Black and Orange

AVAILABLE JANUARY 2021

51LGPT939MXA



## ABOVE AND BEYOND REFLECTIVE DOG COLLAR

Modern collar. Comfort fit. A technical dog collar for outdoor adventures. Features secure construction, with a nylon outer weave for endurance, and neoprene padding for comfort. Designed with reflective orange piping and handy utility clip.

### FEATURES

- Made from hard-wearing materials.
- Designed for maximum comfort.
- Hook and loop adjustment.
- Reflective stitching for increased visibility in low light.

#### Black and Orange

AVAILABLE JANUARY 2021

S	51LGPT940MXC
M	51LGPT940MXD
L	51LGPT940MXE



## ABOVE AND BEYOND PORTABLE PET BOWL

A lightweight foldaway solution for dogs on the move.

1.5 litre capacity ideal for holding food and liquids.

Made with rugged black nylon straps. Stands upright.

Packs away easily. Convenient to transport and clean.

### FEATURES

- Lightweight solution for feeding and drinking.
- Rolls up easily into bag.
- Sturdy, water-resistant construction.

**Black and Orange**

AVAILABLE JANUARY 2021

51LGPT942MXA



## ABOVE AND BEYOND DOG TOY

A toy made to go the distance. Featuring

a detailed tread pattern replicating

the Land Rover tyre. Safe, durable and

designed to gently clean teeth.

### FEATURES

- Made from reinforced material.
- Bouncy, lightweight and hard-wearing.

**Black**

AVAILABLE JANUARY 2021

51LGPT941BKA





ABOVE AND BEYOND  
FUNCTIONAL ACTIVITY BELT

# SECURES

Rugged, reliable and remarkably strong. Featuring an ultra-robust webbing construction with a tensile strength of 6000kg. Fitted with a hard-wearing HYPALON™ stopper. And secured with the world's safest and strongest ANSI COBRA® buckle. A belt that goes beyond the call of duty when you have to.

## Black

S/M 51LGGF382BK4  
L/XL 51LGGF382BK6



Features an ANSI COBRA® buckle: the world's safest and strongest buckle.



Ultra-robust webbing construction.





HYPALON™ stopper  
for heavy-duty  
outdoor use.

WIDTH

38mm

WEBBING TENSILE STRENGTH

6000kg

SECURED BY AN

ANSI  
COBRA®

BUCKLE



MIROVIA SEAM SEALED BACKPACK

# HAULS

The go-anywhere, take-anything backpack. Constructed from 500D PVC material chosen for its uncompromising quality and significant strength. Designed with a large roll-top and heat-sealed seams to keep moisture out. Complete with HYPALON™ lashing points and a release valve for compact packing.

## FEATURES

- 500D PVC material and heat-sealed seams defend contents against water damage.
- 25 litre main compartment with computer pocket for safer storage.
- Exterior features HYPALON™ lashing points.
- Finished with reflective print for superior visibility.
- Hard-wearing valve releases pressure for compact packing.

**Black**

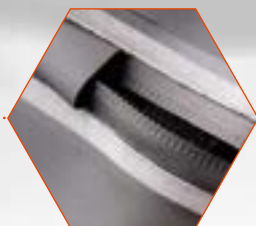
51LGLU385BKA



Features robust 500D PVC material and heat-sealed seams.



Stitched HYPALON™ lashing points.



25 litre main compartment with computer pocket.



Integrated release valve aids compact packing.

ABOVE AND BEYOND FLASK

# SUSTAINS

This robust, double-walled steel flask keeps liquids cold for up to 24 hours and hot for up to 15 hours. Featuring an easy-grip design that can be held with gloves. Durable and rugged with a nylon cord for easy attachment.

Black

51LGGF393BKA

KEEPS LIQUIDS COLD FOR UP TO

## 24hrs

KEEPS LIQUIDS HOT FOR UP TO

## 15hrs

CAPACITY

## 500ml



Features easy-pour lid with removable drinking cup.



Double-walled steel flask means liquid maintains its temperature for longer.



Ergonomic barrel designed for superior grip.



Waterproof seals for secure transportation of liquids.



Nylon cord for easy attachment.

## LEROVA TRAVEL WALLET

This durable travel wallet is built to safeguard your essentials from the elements. 23cm x 3cm x 12cm.

### FEATURES

- Rugged, water-resistant construction.
- Protects your items from water damage.
- Attaches to bags and belt loops with hard-wearing carabiner.

**Black**

51LGLU383BKA



## ABOVE AND BEYOND WATER BOTTLE

A technical water bottle with easy-grip exterior. Constructed from Borosilicate glass that is resistant to thermal shock, it can be easily attached to travel bags. Super durable and expedition friendly.

### FEATURES

- Silicone sleeve.
- Liquid volume marker.
- Watertight lid.
- Anti-slip base.

**Black**

51LGGF392BKA





## ABOVE AND BEYOND BLUETOOTH SPEAKER

Waterproof. Travel-ready. This multi-function Bluetooth speaker is compact enough to take anywhere. And tough enough to take the knocks. 18cm x 5cm x 8cm.

### FEATURES

- Reinforced portable construction.
- Impact resistant and dustproof.
- Carabiner attaches to bags.
- NFC pairing. USB charging.
- Doubles as power bank and mobile speakerphone.
- 12 hour battery.
- Waterproof to 1 metre IP67.

**Black**

51LGGF395BKA



Hooks on to bag with a carabiner.



## ABOVE AND BEYOND CAP

Enhanced breathability and low-light visibility. This quick-drying cap is designed to keep you comfortable, and put your performance first come rain or shine.

### FEATURES

- UPF 40 sun protection.
- Open mesh side panels.
- 3M reflective accents and branding.
- Quick-dry fabrics and ventilation.
- Reflective print to the rear.

Black

51LGCH380BKA



## ABOVE AND BEYOND MICROFIBRE ACTIVE TOWEL

Pack light. Stay dry. This branded microfibre active towel is made from a high-wicking polyester blend that's light, fast-drying and easy to store.

### FEATURES

- High-wicking polyester blend.
- Branded print to one side and orange trim.
- Easy storage in a drawstring pouch.
- Unfolded Size: 110cm x 65cm.
- Folded Size: 16cm x 20cm.

Black

51LGGF386BKA



## ABOVE AND BEYOND MULTI TECH GLOVES

Dynamic movement. Resilient protection. These performance gloves are lightweight, versatile and can be easily adjusted for a tailored fit. Tested extensively by Land Rover Experience for a multitude of outdoor uses.

### FEATURES

- Raised silicone print for enhanced grip.
- Hard-wearing construction.
- Conductive finger-pads for use on any touchscreen device.
- Breathable, anatomical comfort.
- Velcro adjuster on neoprene cuffs.

### Black

S/M	51LGVM381BK4
L/XL	51LGVM381BK6



Conductive finger-pads work on touchscreens.



ABOVE AND BEYOND MULTI TOOL

# ADAPTS

Does everything. Goes anywhere. This handy tool has been designed for hard-wearing use both on and off road. Features 9 individual tools made from reinforced stainless steel.\*

## FEATURES

- Spring-action pliers.
- Knife with safety lock.
- Bottle opener.
- Serrated blade.
- Phillips screwdriver.
- Can opener.

## Orange

51LGGF388BKA



## ABOVE AND BEYOND POCKET MULTI TOOL

Pocket-sized and packed with tools. This all-in-one pocket multi tool is made from stainless steel and reinforced with a black aluminium cover. Small, sleek, but seriously useful.\*

### FEATURES

- Pliers.
- Bottle opener built into cutter.
- Carabiner attaches to bags.
- Phillips screwdriver.
- Knife with safety lock.

**Black**

51LGGF391BKA



\*Minimum age limit applies.

## ABOVE AND BEYOND FOLDING SHOVEL

A tool to travel with. The all-terrain shovel folds down into a portable size. Its sturdy construction and serrated edge make light work of the toughest tasks. Finished with laser engraved branding.

### FEATURES

- Reinforced folding shovel designed for easy storage.
- Easy-grip.
- Dual edged for multi-purpose use.
- Rigid handle for leverage and durability.

**Black**

51LGGF387BKA



LAND ROVER X ELLIOT BROWN  
HOLTON PROFESSIONAL WATCH

# ENDURES

Designed by experts. Used by professionals. This exclusive timepiece, created in collaboration with premium English watchmaker Elliot Brown, offers precision timekeeping and unrelenting durability. Featuring scratch-resistant sapphire crystal, unidirectional bezel and luminous dial and hands. With two straps for all-terrain versatility. Shock resistant. Triple-sealed for water protection. And capable of prolonged exposure to the elements. It's a watch that knows no limits.

## FEATURES

- 43mm case.
- Tested in water at 200m.
- Screw-down triple-sealed crown.
- Rubber strap resistant to temperature extremes.
- Super-LumiNova luminous hands and dial markings.

Black

51LHWM992BKA



High grip uni-directional bezel.



Ultra shock-resistant casing.



Technical webbing strap.





TESTED IN WATER AT

200m

SHOCK-RESISTANT TO

5,000G

CASE

43mm



Fitted soft rubber strap.

LEGO® TECHNIC™ LAND ROVER DEFENDER 90

# INSPIRES

Iconic. Authentic. Experience legendary vehicle design first hand with this LEGO® Technic™ Land Rover Defender. Developed in partnership with LEGO®. Suitable for age 11+. 2,573 pieces. Measures over 8" (22cm) high, 16" (42cm) long and 7" (20cm) wide.

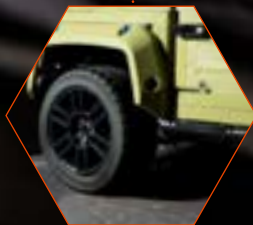
Green

51LGGF397MXA

TO PURCHASE VISIT [SHOP.LANDROVER.COM/UK](https://shop.landrover.com/uk)



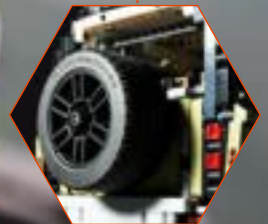
Lift the bonnet to see the detailed in-line 6-cylinder engine with moving pistons.



Functions include working steering, All Wheel Drive with 3 differentials, independent suspension on both axles and a working winch.



Bodywork features Land Rover logo, removable roof rack with storage box, pannier, ladder and traction mats, opening doors, hood and tailgate, plus a detailed interior.

**TECHNIC™**

Turn the rear-mounted spare wheel to open the tailgate.



4-speed sequential gearbox and gear selector with 2 levers for engaging high or low gear.

# SCALE MODELS

The new Land Rover Defender represents over 70 years of innovation. This range of scale models captures all their rugged, iconic style. Made from high quality materials. Rich with detail and infused with a legendary history.



## DEFENDER 90 FIRST EDITION SCALE MODEL 1:43

Collectors' edition replica of the new Land Rover Defender 90 in Pangea Green with contrast roof. High quality diecast model made from zinc alloy.

### Pangea Green

AVAILABLE JANUARY 2021

51LGDC921GNY



## DEFENDER 110 EXPLORER PRO SCALE MODEL 1:43

Collectors' edition replica of the new Land Rover Defender 110 with Explorer Pro accessory pack in Indus Silver. High quality diecast model made from zinc alloy.

**Indus Silver**

AVAILABLE JANUARY 2021

51LGDC922SLY



## DEFENDER 110 X SCALE MODEL 1:43

Collectors' edition replica of the new Land Rover Defender 110 X in Gondwana Stone. High quality diecast model made from zinc alloy.

**Gondwana Stone**

AVAILABLE JANUARY 2021

51LGDC953BNY





## CLOTHING FEATURES GUIDE



### RODINIA HYBRID JACKET

**PRIMALOFT.**

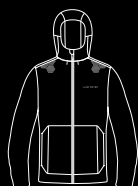
**DWR**

ABRASION  
RESISTANCE

**PRIMALOFT.**  
AEROGEL

**YKK**  
QUICKBURST

MODULAR  
SYSTEMS



### SCORIA TECH MID LAYER

**DWR**

GLASSBEAD  
TECHNOLOGY



### TEPHRA GORE-TEX SHELL PARKA

**GORE-TEX®**

**DWR**

GLASSBEAD  
TECHNOLOGY

**Cohæsive™**  
EMBEDDED COMPONENTS

THREE LAYER SHELL

**TAPED SEAMS**



### WELDED THERMO JACKET

**Cohæsive™**  
EMBEDDED COMPONENTS

**DWR**

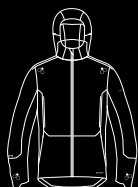
GLASSBEAD  
TECHNOLOGY

**PRIMALOFT.**  
AEROGEL

**PRIMALOFT.**  
CROSS CORE  
TECHNOLOGY

**RECCO®**

ULTRASONIC  
WELDING



### LITE GORE-TEX PACKABLE JACKET

**GORE-TEX®**

**DWR**

GLASSBEAD  
TECHNOLOGY

**Cohæsive™**  
EMBEDDED COMPONENTS

**PACKABLE**

**TAPED SEAMS**



### REVERSIBLE BASE LAYER

**Reversible**

**HYBRID**

**30**  
UPF THIRTY

GLASSBEAD  
TECHNOLOGY



## CLOTHING SIZE GUIDE

UK MEN'S	CHEST (CM)
XS	79 - 84
S	86 - 91.5
M	94 - 99
L	101.5 - 106
XL	109 - 114
XXL	117 - 122
XXXL	125 - 130

UK WOMEN'S	BUST (CM)
8	78.5 - 81
10	82 - 86
12	87 - 91.5
14	92 - 96.5
16	97 - 101.5
18	102 - 106.5

Product availability and pricing are subject to change. All copy and images remain the copyright of Jaguar Land Rover. Correct at time of publication; subject to availability and market; Jaguar Land Rover reserve the right to remove or change specification of items in the range at any time.








# THE ICON LIVES ON

---



In 1948, Maurice Wilks and his brother Spencer unveiled the world's first Land Rover. Over 70 years later, what began life as a sketch in the sands of Anglesey has become an international symbol of adventure. An icon that lives on with our Heritage Collection. Apparel and lifestyle accessories inspired by Land Rover's rich heritage, and made to last for generations to come.

---

**MEN'S HERITAGE GRAPHIC T-SHIRT**

100% cotton T-shirt with Heritage logo to the chest. Features back neck woven label and wordmark side tab.

Grey Marl

XS	51LFTM946GMB	XL	51LFTM946GMF
S	51LFTM946GMC	XXL	51LFTM946GMG
M	51LFTM946GMD	XXXL	51LFTM946GMH
L	51LFTM946GME	XXXXL	51LFTM946GM3







#### MEN'S HERITAGE FLANNEL SHIRT

Heritage in every stitch. This 100% brushed cotton shirt in Grey features an original check design with faux horn buttons, button down collar, two chest pockets and branded heritage tab.

Grey

XS	51LFSM948GYB	XL	51LFSM948GYF
S	51LFSM948GYC	XXL	51LFSM948GYG
M	51LFSM948GYD	XXXL	51LFSM948GYH
L	51LFSM948GYE		



#### MEN'S HERITAGE POLO SHIRT

100% cotton piqué polo shirt in Grey Marl with contrast section to the upper chest. Features rib collar and cuffs with contrast tipping and wordmark side tab. Heritage logo to sleeve.

Grey Marl

XS	51LFPM950GMB	XL	51LFPM950GMF
S	51LFPM950GMC	XXL	51LFPM950GMG
M	51LFPM950GMD	XXXL	51LFPM950GMH
L	51LFPM950GME		



#### UNISEX HERITAGE CAP

Classic baseball cap in Grey Marl with navy peak and trim. Features embroidered Heritage logo to the front with wordmark tab to one side.

Grey Marl - 51LFCH943GMA



#### HERITAGE CANVAS WALLET

A classic wallet with six card slots and a slip for the Defender Multi Tool. Features laser etched Heritage logo and white stitching. Defender Multi Tool sold separately.  
Navy - 51LGGF481NVA



#### DEFENDER MULTI TOOL

Black steel credit card sized multi tool crafted into a Defender silhouette. Features a range of practical tools including tyre tread gauge.  
Black - 51LDTT619NVA



LAND ROVER



#### LAND ROVER CLASSIC WATCH

A new take on a Heritage classic. Featuring a rotating outer bezel that can be aligned to track a second time zone. With luminous hands and indices, Land Rover wordmark, date aperture and textured Italian leather strap. Water-resistant to 10 ATM. Supplied in Land Rover presentation box. White - 51LHWM975WTA





**LAND ROVER HERITAGE WATCH**

A watch that takes you back. Inspired by original pilot designs, it features chronograph sub-dials, Heritage logo and leather strap with stitching detail. Complete with date aperture, matte black dial and ion-plated case. Supplied in Land Rover presentation box.  
Black - 51LHWM977BKA



**HERITAGE BOTTLE  
OPENER KEYRING**

Handy keyring wrapped in fine leather with flip-out bottle opener. Features debossed Heritage logo, split ring and a lobster clasp.

Brown - 51LFKR360BNA



**ADVENTURE BEAR**

A loyal companion for all of your little one's expeditions. Land Rover Adventure Bear dressed in oval badge shirt, shorts and explorer's hat with messenger bag.

Brown - 51LDTY913BNA



**DEFENDER KEYRING**

Take the spirit of the Defender with you. This nickel-plated miniature die-cast keyring features a Land Rover wordmark etched into the split ring.

Silver - 51LEKR323SLA



**HERITAGE LOGO MUG**

White bone china mug with Heritage logo to one side and Land Rover Defender print to the other.

White - 51LFMG363WTA  
LIMITED AVAILABILITY





#### LAND ROVER ICON BOOK

The official Land Rover book covering the Series and Defender models. Containing ten chapters that celebrate these iconic vehicles and the people who drive them.  
200 pages - 51LFGF412NAA



#### HERITAGE PIN BADGE SET

Brass pin badges featuring a range of iconic Land Rover symbols. Includes Series I, Classic Range Rover, Heritage logo, oval badge and Heritage Station Wagon logo. Includes presentation tin.

Set of 5 - 51LFGF362NVA  
LIMITED AVAILABILITY

## LAND ROVER

### LEATHER WEEKEND BAG

Packed with versatility. Made from highly supple oil-washed natural-grain brown leather, this Leather Weekend Bag is flexible in every sense. Ideal for day trips or extended excursions, it features sturdy handles, a detachable padded shoulder strap and a practical zip pocket. Includes protective dust bag.

W 40cm H 18cm

Brown - 51LELU364BNA

### HERITAGE DUFFLE BAG

An over-the-shoulder drawstring duffle bag in Navy with white trim. Made from hardwearing canvas, this bag features an embroidered Heritage logo to the front.

H 50cm D 30cm

Navy - 51LFLG361NVA





## THE HERITAGE COLLECTION



### HERITAGE TOTE BAG

Carry the enduring spirit of Land Rover with you wherever you go. 100% cotton reusable canvas tote bag with Series I graphic to the front.  
White - 51LFLU046WTA



## LAND ROVER

### HUE MUG

Start your day's journey with this ceramic mug in Grasmere Green, featuring the HUE 166 logo with relief border. Microwave and dishwasher safe.

Grasmere Green - 51LRCEAHUEG



### 1 HUE NOTEBOOK SMALL A6

Made with eco-friendly stone paper that's tough, tear-resistant, greaseproof and waterproof, this A6 notebook features the HUE 166 number plate logo. Includes a HUE technical drawing to the inside.

Grasmere Green - 51LDNB561GNA

### 2 HUE NOTEBOOK AND ORGANISER

Take note. This HUE canvas notebook and organiser has a grey contrast stitch and versatile pocket storage. Features a HUE 166 woven badge.

Grasmere Green - 51LDNB562GNA





### MEN'S HUE GRAPHIC T-SHIRT

A 100% cotton T-shirt with a technical drawing of the famous HUE 166 on the chest.

Black

LIMITED AVAILABILITY

S	51LDTM558BKC	XXL	51LDTM558BKG
M	51LDTM558BKD	XXXL	51LDTM558BKH
L	51LDTM558BKE	XXXXL	51LDTM558BK3
XL	51LDTM558BKF		

Grey - 51LDTM558GY

White - 51LDTM558WT



### HUE 166 KEYRING

Classic HUE 166 number plate logo keyring in polished chrome.

Black - 51LDKR914BKA



### HUE TEDDY BEAR

Children's soft toy dressed in Heritage HUE 166 overalls and tweed flat cap.

Sporting a Land Rover logo, he makes a popular gift for any child. Suitable for all ages with appropriate adult supervision.

Brown - 51LDY618BNA



### HUE CERAMIC PET BOWL

A sturdy Grasmere Green ceramic pet bowl with an embossed HUE 166 number plate logo to the front.

Small - 51LFPT398GNA

Large - 51LDPT788GNA



LAND ROVER







**BARBOUR TARTAN  
DOG BANDANA**

A bandana specially made for dogs, featuring Barbour for Land Rover Tartan in 100% cotton.

S / M - 51BEPT286MX4  
£20.00



**BARBOUR TARTAN  
DOG HARNESS**

Stylish and functional dog harness featuring Barbour for Land Rover Tartan.

£30.00  
LIMITED AVAILABILITY

L 51BEPT287MXE



**BARBOUR TARTAN  
DOG COLLAR**

Barbour for Land Rover Tartan collar lined with leather. Features aged brass-plated metal fittings.

£40.00

S 51BEPT284MXC  
M 51BEPT284MXD  
L 51BEPT284MXE



**BARBOUR TARTAN  
DOG LEAD**

Made from real leather, this lead features contrast top stitching and aged brass-plated fittings.

One size - 51BEPT285MXA  
£55.00



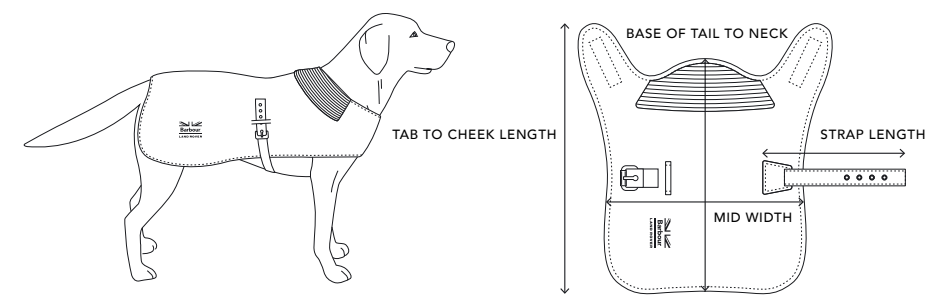
#### BARBOUR WAX DOG COAT

Keep your best friend safe from the elements in this water-resistant, wax jacket. Made with Barbour for Land Rover Tartan, it features a collar that lifts for extra protection.

#### LIMITED AVAILABILITY

S	51BEPT289OLC
M	51BEPT289OLD
L	51BEPT289OLE

DOG COAT SIZE GUIDE



SIZE	S	M	L	XL
BREED	Terrier	Spaniel	Retriever	Pointer
NECK TO TAIL	35cm	45cm	55cm	66cm
MID WIDTH	30cm	38cm	46cm	55cm
TAB TO CHEEK LENGTH	44cm	57cm	70cm	82cm
STRAP LENGTH	26cm	34cm	43cm	52cm

DOG COLLAR SIZE GUIDE

SIZE	S	M	L
COLLAR MEASUREMENTS	14mm x 40cm	19mm x 53cm	25mm x 63.5cm
TO FIT NECK	27.5cm x 35.5cm	36cm x 46mm	47cm x 56.5cm

CLOTHING SIZE GUIDE

UK MEN'S	XS	S	M	L	XL	XXL	XXXL	XXXXL
CHEST (CM)	88	92	97	102	107	112	117	122

Product availability and pricing are subject to change. All copy and images remain the copyright of Jaguar Land Rover. Correct at time of publication; subject to availability and market; Jaguar Land Rover reserve the right to remove or change specification of items in the range at any time.



**ABOVE & BEYOND**

**Find us at:**

[shop.landrover.co.uk](http://shop.landrover.co.uk)  
Or visit your local retailer

**Registered Office:**

Abbey Road, Whitley, Coventry CV3 4LF  
Registered in England No: 1672070.  
VAT Registration No: GB927153228.